

PART OF THE NE.1/4, OF SECTION 19, T.6N., R.1W., S.L.B. & M.

256

BUSINESS DEPOT OGDEN – PLAT 25

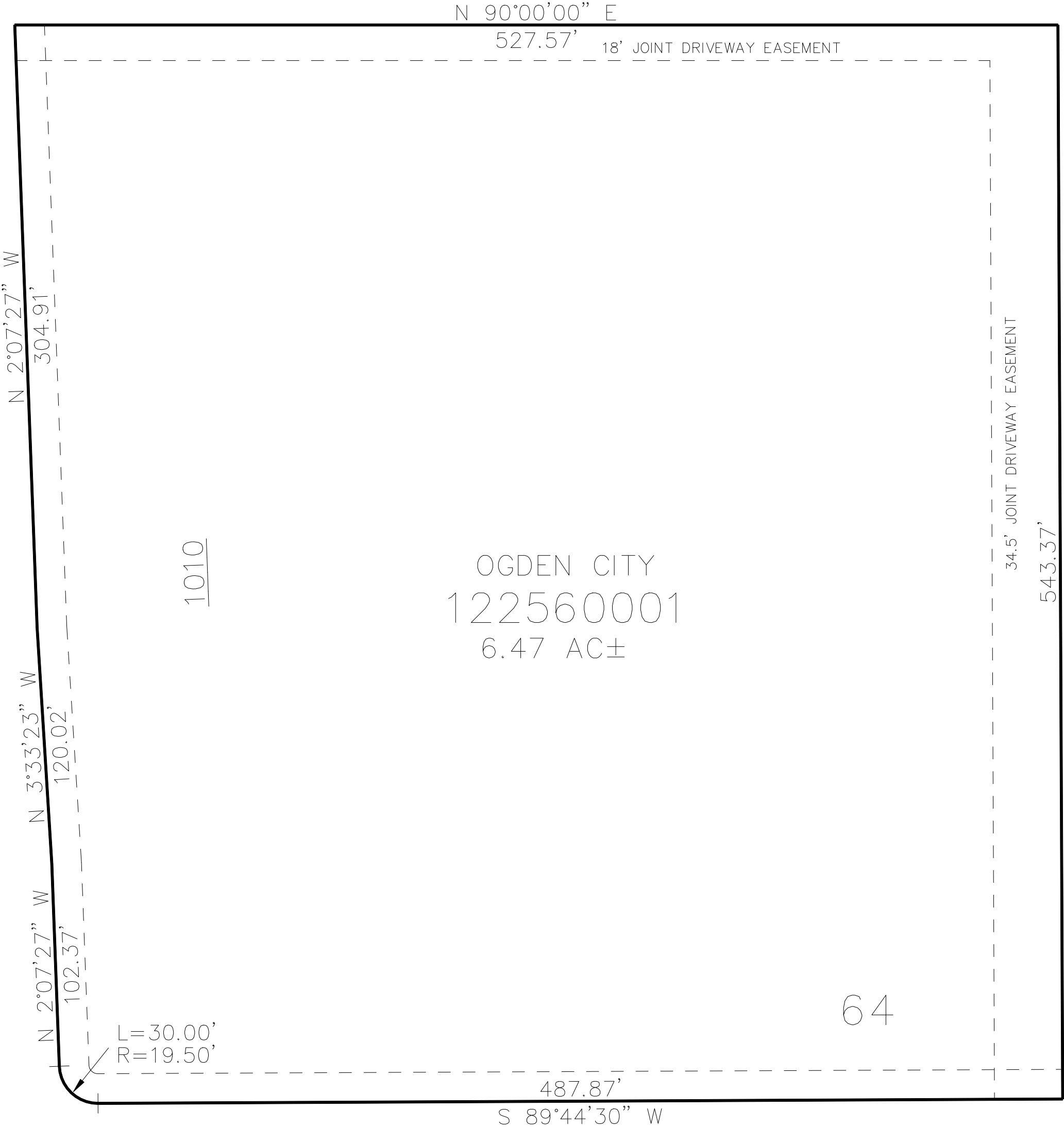
IN OGDEN CITY

TAXING UNIT: 359

SCALE 1" = 50'

SEE PAGE 98

DEPOT DRIVE



SEE PAGE 98

SEE PAGE 98

15' UTILITY & DRAINAGE EASEMENTS EACH SIDE OF PROPERTY LINES AS INDICATED BY DASHED LINES EXCEPT AS OTHERWISE SHOWN.

FOR COMPLETE ENG DATA SEE ORIGINAL DEDICATION PLAT IN BOOK 75, PAGE 10 OF RECORDS.

1050 SOUTH STREET